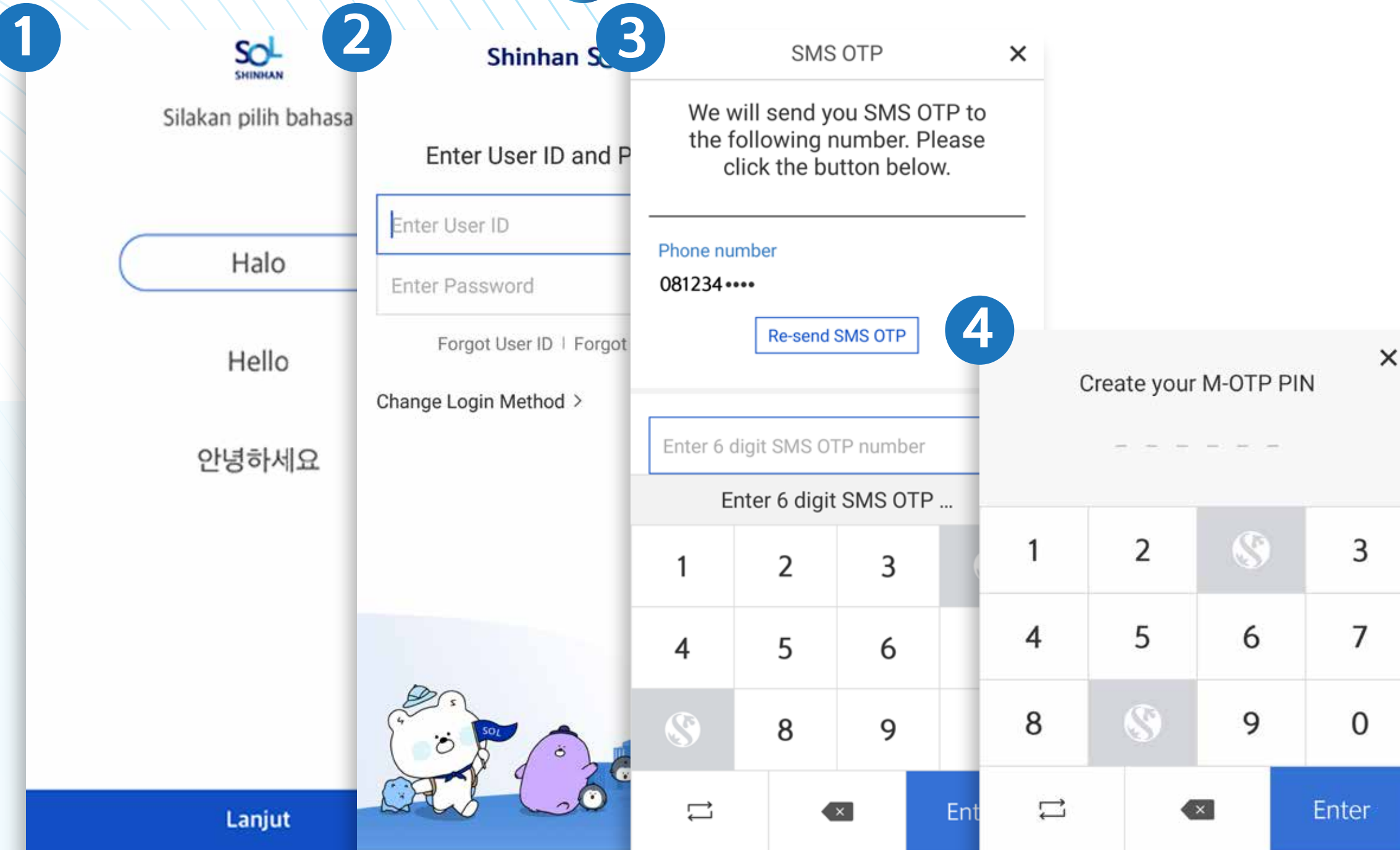


# First Login to SOL



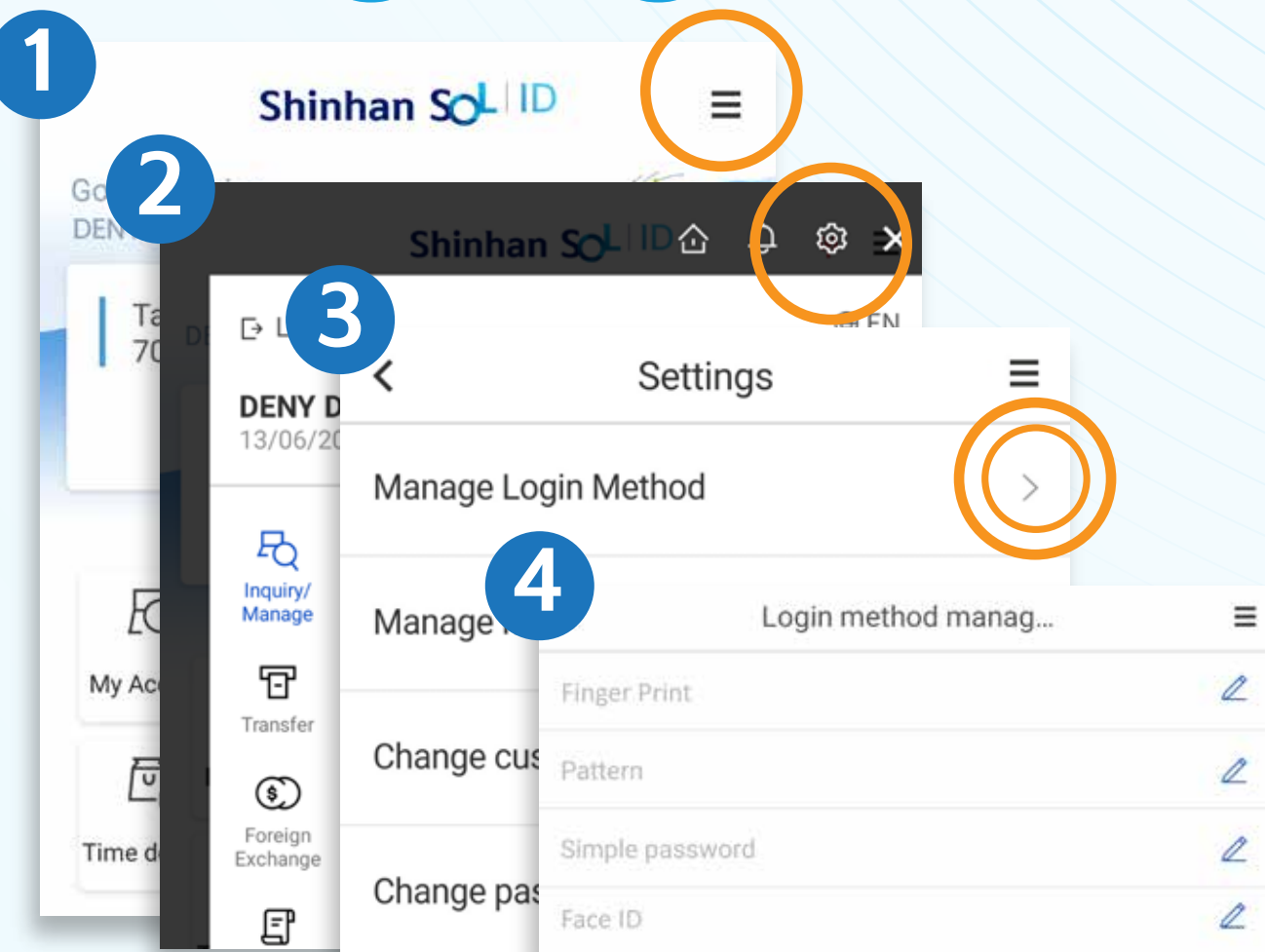
1. Select language then confirm & SOL Introduction will be displayed
2. Input your User ID & Password
3. Click "Send SMS" & input SMS OTP
4. Create & confirm your M-OTP PIN (6 digit)  
*M-OTP PIN will be needed for every transaction*
5. Make new password (only for new customer)

Download

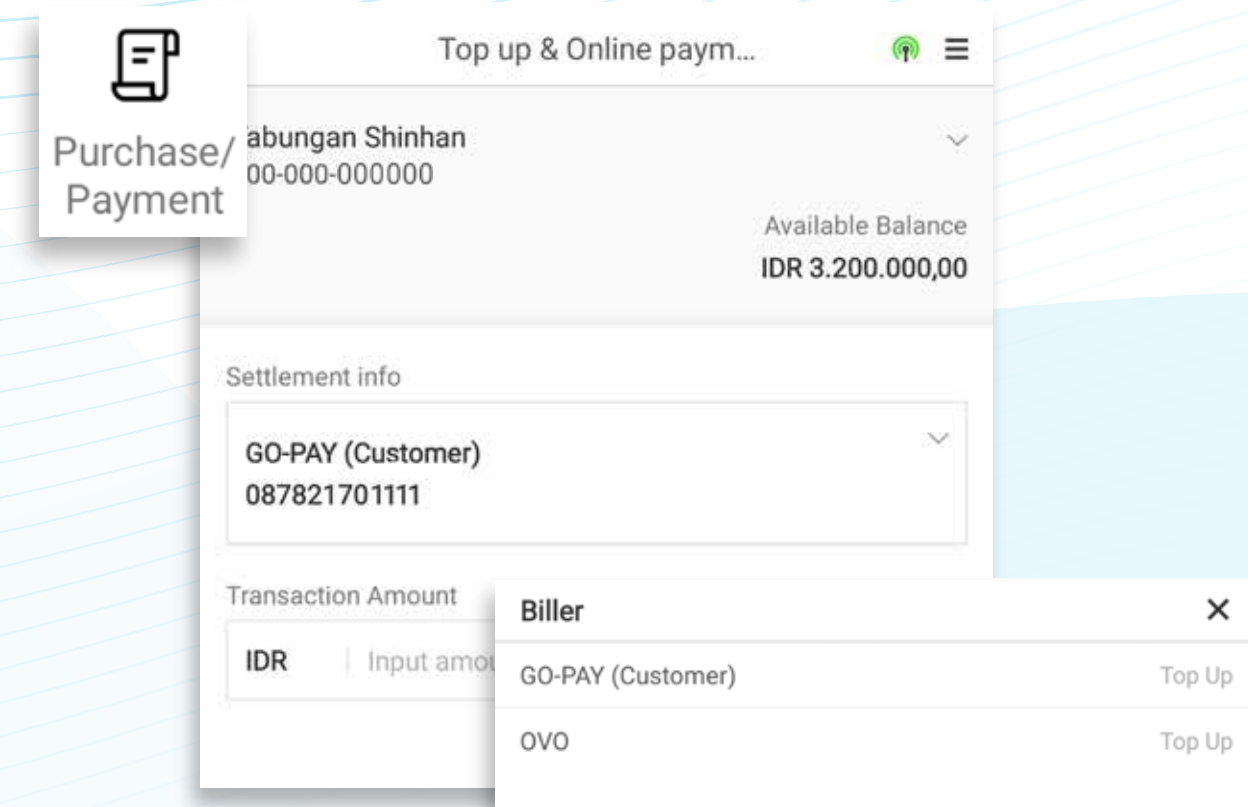


## Top Up & Online Payment

## Change login method



1. Click icon ☰
2. Choose icon ⚙️ to go to setting menu
3. Choose "Manage Login Method"
4. You can register Fingerprint, Pattern, Simple Password (6 digit number) or Face ID (Iphone X)
5. When you login to SOL, you can choose login method that you have registered



1. Click icon ☰ and choose "Purchase / Payment" then "Top up & Online payment"
2. You can choose biller Gopay or OVO
3. Input your registered phone number and top up amount

# Foreign Transfer

1. Click icon and choose "Foreign Exchange"
2. Input beneficiary bank, account number, transfer amount, correspondent fee, and the other information.
3. Information about exchange rate will be shown after clicking "Calculate" button

※ Credit account number should be IBAN number if the beneficiary bank use IBAN  
example : **NL91ABNA012346789**

# Rupiah Transfer

1. Click icon and choose "Transfer"
2. Choose beneficiary bank and input beneficiary account number
3. Choose transfer type

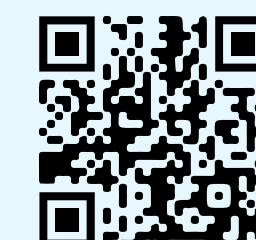
Transfer Limit	
<b>Online</b>	10.000 - 50.000.000 (Individual) 10.000 - 200.000.000 (Corporate)
<b>SKN</b>	10.000 - 1 Billion
<b>RTGS</b>	100.000.001 - Unlimited

※ Transaction limit is subject to customer's maximum transfer limit

# Online Time Deposit

1. Click icon and choose "Product"
2. Choose Online Time Deposit currency type
3. Input deposit amount and select term and interest payment
4. Information about interest rate will be shown after clicking "Inquire interest rate" button

Scan for more information



<https://www.shinhan.co.id/en/sol>